



Skyfire 1.0

for Symbian Devices

Table of Contents

What's new in Skyfire?.....	3
The Skyfire Start Page.....	4
How can I zoom in on a web page?.....	5
How can I zoom out on a web page?.....	6
How can I register with Skyfire?.....	7
What can I do from the Menu button?.....	8
What activity feeds are available on the start page?.....	9
Can I add my own RSS feeds?.....	10
How can I customize RSS feeds?.....	11
How do I filter feeds?.....	12
How do I add a Facebook account?.....	13
How do I add a Twitter account?.....	14
How can I share status updates?.....	15
How can I see status updates from my friends on Skyfire?.....	16
Can I share a Web page with Facebook and Twitter friends?.....	17
How can I perform a web search?.....	18
How can I get to a specific web page?.....	19
Can I perform a search while Skyfire is starting up?.....	20
How can I move between web pages?.....	21
How does text entry work on Skyfire?.....	22
How do I download web content?.....	23
Can I share web content via SMS?.....	24
What is the mobile site indicator?.....	25
How do I add and remove bookmarks?.....	26
How can I view my browsing history?.....	27
How can I share Skyfire?.....	28
Where can I get help?.....	29

What's new in Skyfire?

The 1.0 release of the Skyfire mobile browser contains the following new features and enhancements:

- **Thumbnail interaction** You can now click on links without having to zoom in first. Handy for the newer larger screen devices.
- **Improved Zoom** Double-tap or double-click to zoom over any element, including links, images or videos. The zoom interaction is as well smoother and more responsive. Best of all: when you zoom you will get immediately readable text (beforehand text was blurry and took a while to become sharp).
- **Fast Start** The Superbar will be shown as quickly as possible, allowing you to immediately type where you want to navigate.
- **Enhanced navigation**, including updated back, forward, and shortcut controls. Also, when you navigate back or forward, you are returned to the last view (e.g. zoom level and portion of the page).
- **Reconnect to last state** When Skyfire disconnects after being idle, upon reconnect it will reload the same page, regardless of how long you have been away.
- **Connection management.** Skyfire can now remember the last connection for you, so you will not have to choose every single time. In addition if you want to change the connection type while you are in Skyfire you can do so.
- **Improved page handling** especially for AJAX - intensive sites such as Facebook and Gmail. Also pages with iframes pages are handled better.

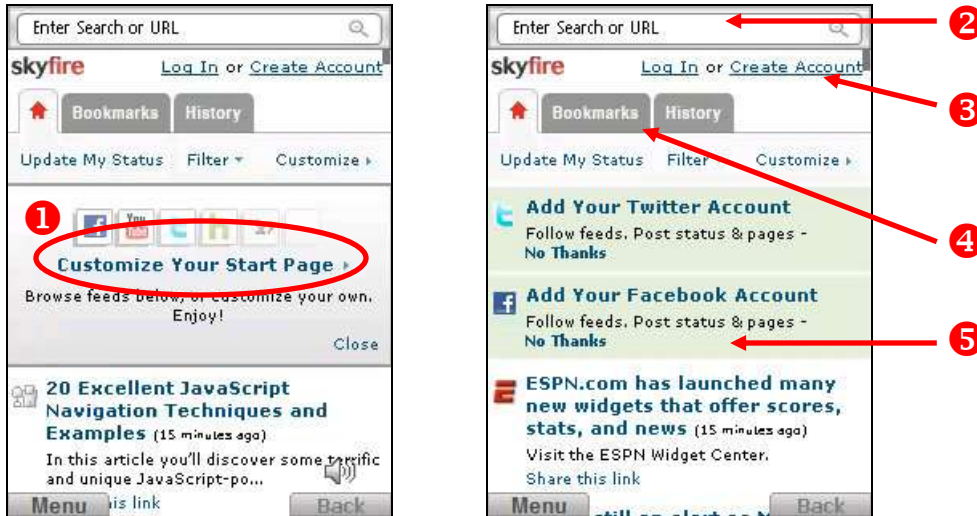
Version 1.0 retains key functionality from 0.9 that is worth highlighting:

- **Integration with Twitter and Facebook.** You can add Facebook and Twitter accounts to Skyfire, allowing you to follow news feeds and Twitter streams in real-time. You can also share web pages with Twitter and Facebook friends.
 - **RSS feeds on start page.** You can now follow RSS feeds from the start page, and add custom feeds.
 - **Enhanced text readability** Text size is adapted automatically for large text areas to allow articles to be read without the need to scroll horizontally.
 - You can set Skyfire as your **default browser**.
 - Enhanced **inline text entry** allows you to more easily complete web forms right within a page. You automatically move to the next form element (text field, list, radio button, or checkbox) after you have made an entry using the 'OK' or 'Enter' keys.
 - Use our handy **Superbar** to perform a search or enter a URL from a single field – it's a great time and space saver. As always, we provide you search results from Google.
- Content download** allows you to download images and other content from most web pages..

The Skyfire Start Page

After you launch the Skyfire browser and the initial loading sequence is complete, you will land on the *start page*. From the start page, you can quickly perform a variety of tasks.

On the Skyfire start page, you can:

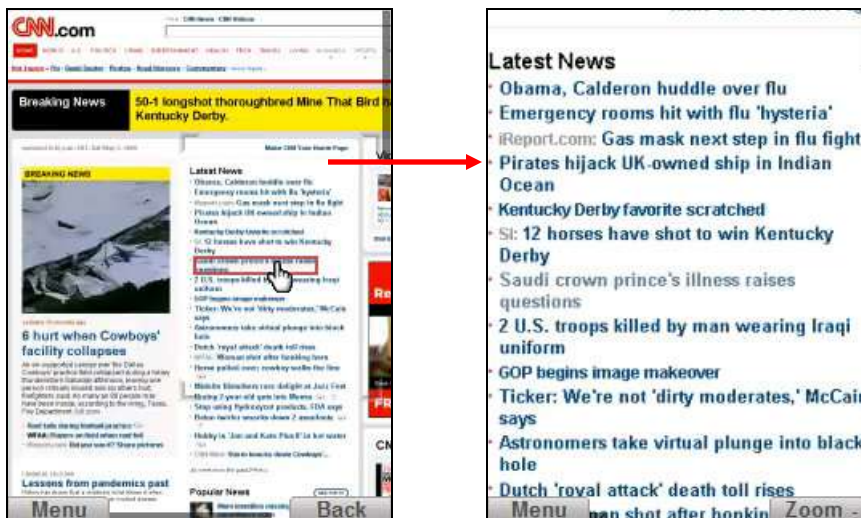


- 1 When Skyfire first opens, you can select [Customize Your Start Page](#) to set up your Facebook or Twitter accounts, or to add RSS feeds to your start page.
- 2 Superbar – a handy tool that lets you perform a web search (powered by Google) or enter a URL.
- 3 Log in to your Skyfire account or create an account to register with Skyfire.
- 4 Open the start page, and access your bookmarks and browsing history.
- 5 View and manage real-time RSS feeds and social network updates from Facebook and Twitter.

How can I zoom in on a web page?

When you go to a website, you first see a thumbnail style overview of the page. The thumbnail is a snapshot of the web page as it would appear on a desktop or laptop. From here you can move around the page, and interact with links and fields on a page, and double-click the device's center button to zoom in on an area that interests you.

Camera corners are displayed when you navigate with your device's navigation keys. You can move around the thumbnail using your device's navigation controls. As you move around, the camera corners will show areas of interest automatically sized to match page columns. For example, it might cover the width of a picture or text column. This gives you a contextual view of the screen area you will zoom in on if you click your device's center select button at that point.



- 1 Use your device's navigation controls to move to the area of the page you want to zoom.
- 2 While the camera corners are visible, double-click your device's center select button to zoom in on an area that interests you, and when you have zoomed in as far as you can, double-click to zoom back out.
- 3 You can return to thumbnail view by selecting the [Zoom -](#) left soft-key.

How can I zoom out on a web page?

You can manually adjust the zoom level if the automatic zoom does not provide an adequate frame. You can zoom in on specific elements within a web page. You can also zoom back out to get an overall view of a page and see a specific area within the context of the full page. See [How can I zoom in on a web page?](#) for more information on using contextual zoom.

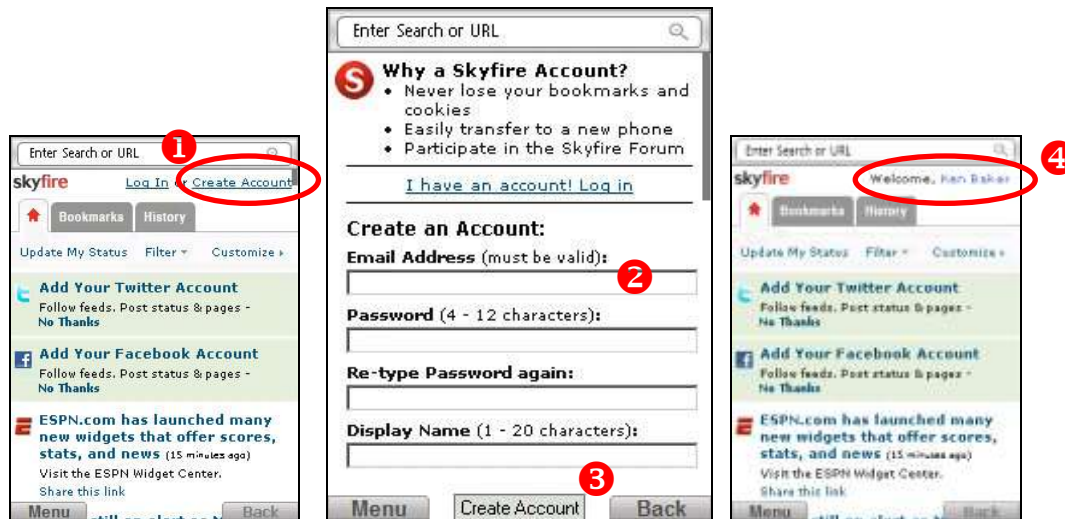


- 1 Use the zoom option from the thumbnail (as described on the previous page).
- 2 To finetune the zoom level, you can press 3 on your keyboard to zoom in and press 1 to zoom back out.
- 3 You can return to thumbnail view by selecting [Zoom -](#) on the left soft-key.

How can I register with Skyfire?

Creating an account to register with Skyfire allows you to easily save and transfer your bookmarks, cookies and Skyfire settings between phones. It also allows you to participate in the Skyfire user forum.

To create a Skyfire account:



- 1 On the Skyfire start page, select [Create Account](#).

If you already have an account, you can select [Log In](#) to log into your account.

- 2 Enter your email address, password, and display name on the Create Account page. Please ensure that you provide a working Email address. This allows you to recover your account in case of a lost password. Your display name is the name you would like to appear on the Skyfire start page when you are logged in to your account.
- 3 Select [Create Account](#).
- 4 Your display name appears on the Skyfire start page.

You can select your display name to edit your email address, password, or display name.

What can I do from the Menu button?

The Menu button, positioned in the lower right corner of your screen, contains a variety of browsing features and functions.

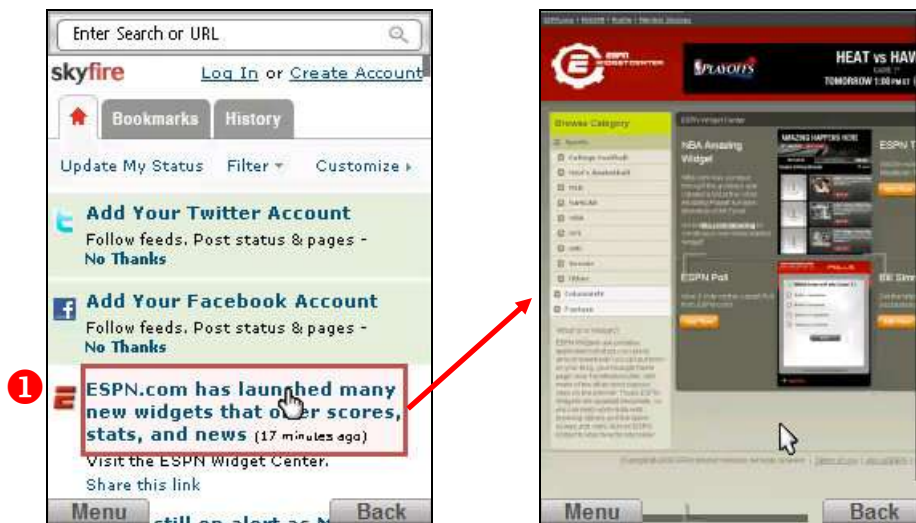


- Web Search or URL** Displays a combined address bar and search entry field. We call this Superbar. From here, you can enter a URL or perform a web search.
- Start Page** Takes you to the Skyfire start page.
- Navigation** Displays the Navigation sub-menu. You can view bookmarks, load browsing history, refresh the current page, or go back or forward.
- Actions** Displays the Actions sub-menu. You can mute browser volume, add bookmarks, and save images.
- Share** Displays the Share sub-menu, from where you can share a link to the current web page through SMS or to Twitter or Facebook, or share the Skyfire browser.
- Connections** Set Skyfire to remember the last connection method (carrier network or WLAN), or open the connection options to select a different connection method.
- Settings** Access Skyfire settings options.
- Help** Allows you to access the Skyfire Quick Start Guide.
- Exit Skyfire** Closes the Skyfire browser.
- Upgrade Skyfire (when available)** This menu appears only if a new upgrade to the latest version of Skyfire is available. We encourage you to use this option when available.

What activity feeds are available on the start page?

The Skyfire start page comes pre-loaded with some great RSS feeds. The feed updates are displayed in chronological order on the Start page, with the most recent feeds appearing at the top of the list.

Feeds included by default are: Google News, Yahoo! News, YouTube, Hulu, ESPN Sports, Digg.com, and Howcast.



- 1 Select a feed link or favicon to open a feed.

Can I add my own RSS feeds?

Yes, you can add your own RSS feeds to the list of feeds available by default on Skyfire.

To add an RSS feed:



- 1 Select [Customize](#) | [MyFeeds](#) | [Add a new feed](#).
- 2 Enter the address of the web site that you want to add a RSS feed for. (Skyfire will present a list of available feeds). Alternatively, you can enter the specific feed URL.
- 3 Select [OK](#).

How can I customize RSS feeds?

You can activate or deactivate any of your RSS feeds or social networks.

To activate or deactivate RSS feeds:



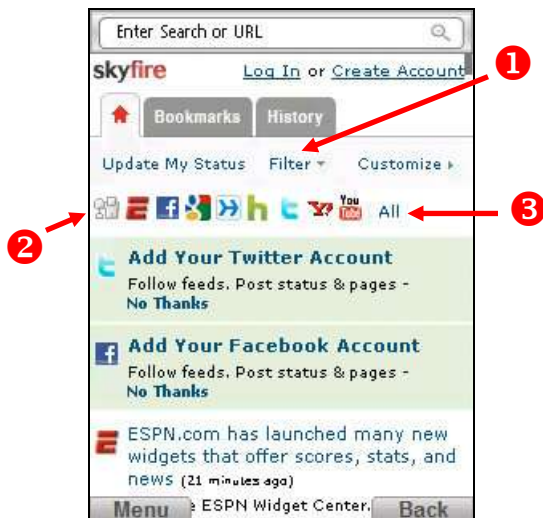
- 1 Select [Customize](#).
- 2 Feeds are organized in four categories – Social, News, Media, and My Feeds.

Select a category tab.
- 3 To deactivate a feed, select the [Active](#) button for that feed.
- 4 To activate a feed, select the [Off](#) button for that feed.

How do I filter feeds?

You can filter your feed display to show items only from a selected feed source or social network.

To filter your RSS and social network feeds:



- 1 Select [Filter](#).
- 2 Favicons are listed for all of your feeds.
Select a favicon to show all items from that feed only.
- 3 Select [All](#) to show all your RSS feeds and social network updates.

How do I add a Facebook account?

You can create a Facebook account and add it to Skyfire, allowing you to view and share real-time updates with friends and co-workers.

To add a pre-existing Facebook account:



- 1 Select [Customize](#).
- 2 On the Social tab, select the [Login](#) button for Facebook.
- 3 Enter your Facebook account credentials – Email address and Password.
- 4 Select [Login](#).
- 5 To allow status updates to be shared from Skyfire, select [Continue](#).
- 6 To allow offline access, select [Continue](#).

Your Facebook account is now added to Skyfire. Select [Back to Start](#) to return to the Skyfire start page where you can view updates from Facebook friends.

Tip: Create an account with Skyfire and you will not have to configure this again, in case you change phones.

How do I add a Twitter account?

If you already have a Twitter account, you can add it to Skyfire, allowing you to view and share real-time updates with friends and co-workers.

To add a pre-existing Twitter account:



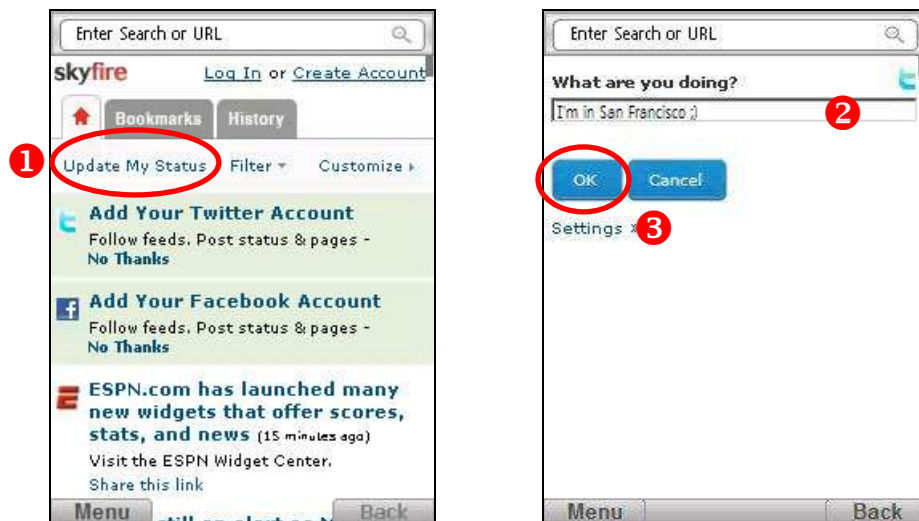
- 1 Select [Customize](#).
- 2 On the Social tab, select the [Login](#) button for Twitter.
- 3 Enter your Twitter account credentials – Username and Password.
- 4 Select [Authorize](#).

Your Twitter account is now added to Skyfire. Select [Back to Start](#) to return to the Skyfire start page where you can view updates from Twitter friends.

How can I share status updates?

Status updates are messages sent to selected friends by Facebook and Twitter users. As a Facebook or Twitter user, you might send status updates to tell friends about a new job, an interesting news item, or simply to tell friends what you are doing or where you are at the current moment.

To send a Facebook and/or Twitter status update from Skyfire:



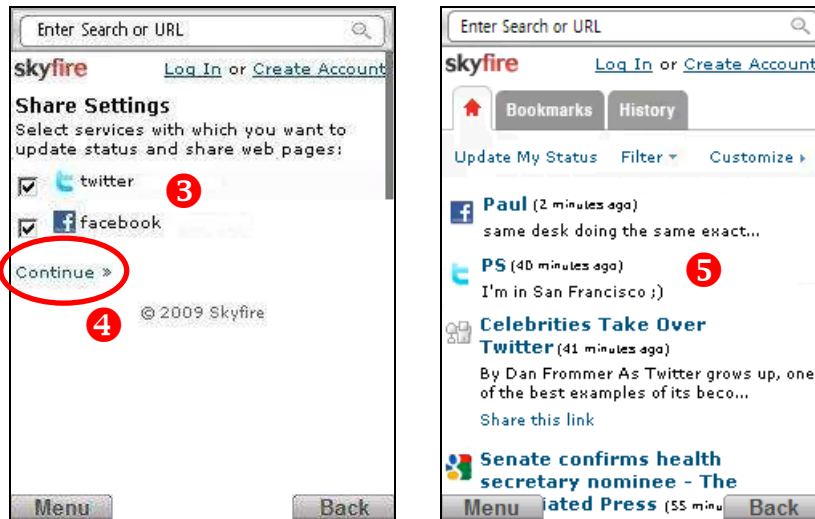
- 1 Select [Update My Status](#).
- 2 Enter your update message.
- 3 Select [OK](#).

Your update message is posted to Facebook and/or Twitter.

How can I see status updates from my friends on Skyfire?

You can allow Skyfire to receive real-time status updates from Facebook and Twitter.

To allow status updates:

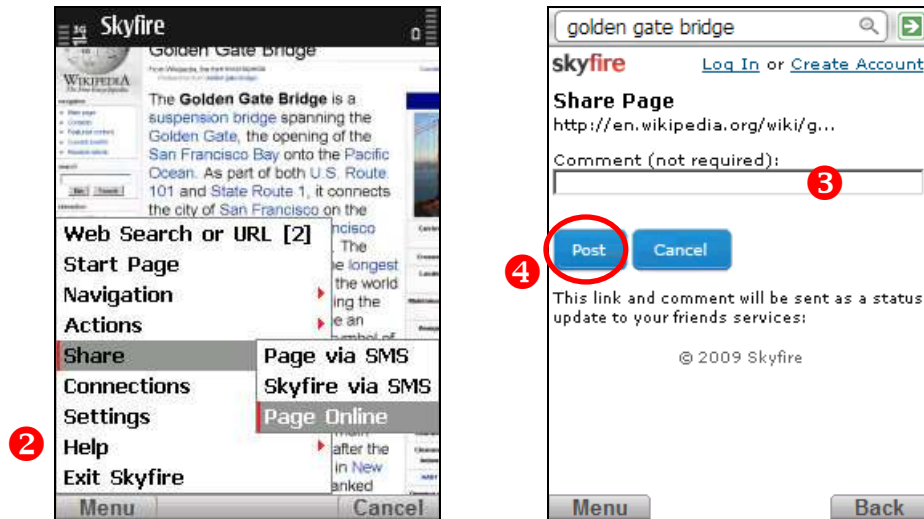


- 1 Select [Update My Status](#) on the Skyfire start page.
- 2 Select [Settings](#).
- 3 Select the accounts you wish to receive status updates from.
- 4 Select [Continue](#).
- 5 Updates are displayed on the Skyfire start page in real-time.

Can I share a Web page with Facebook and Twitter friends?

Yes, once you have Facebook and/or Twitter set up on Skyfire, you can share links to Web pages with your friends online.

To share a web page:



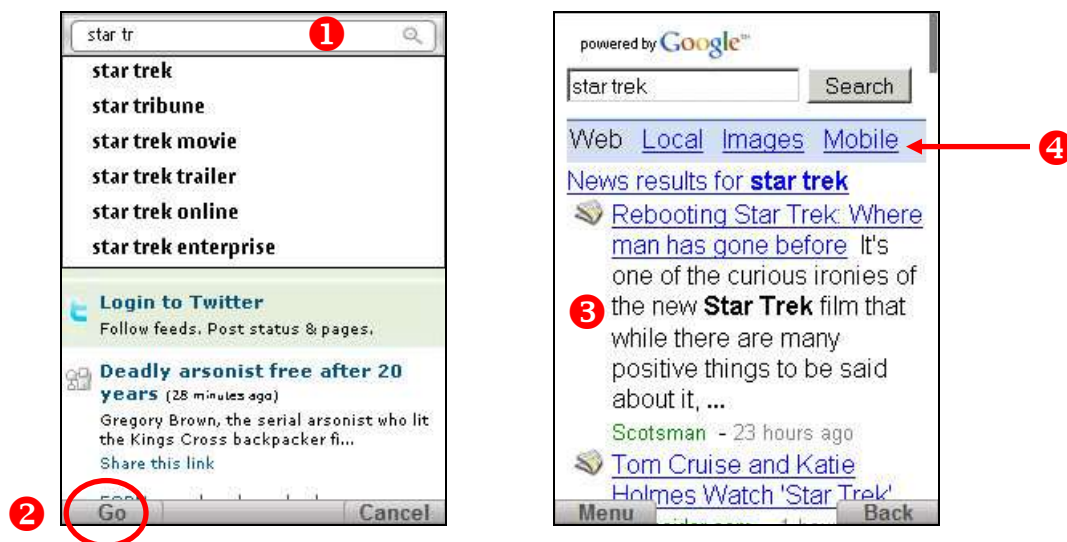
- 1 Browse to the page you want to share.
- 2 Select [Menu](#) | [Share](#) | [Page Online](#).
- 3 Enter a comment, if you wish.
- 4 Select [Post](#).

How can I perform a web search?

You can search the web using the Skyfire Superbar, or from the Search tab on the Skyfire start page.

The Superbar is displayed by default on the Skyfire Start page. From any other web page, you can launch the Superbar via the Menu key by selecting [Menu | Web Search](#) or [URL](#). You can also launch the Superbar by pressing the '2' shortcut button on your device or by scrolling to the top of the page.

To perform a web search:



1 If the Superbar is not visible, select [Menu | Web Search](#) or [URL](#). Using your device keyboard, start typing a search term or URL in the Superbar.

2 An auto-complete list features the most used search terms. It greatly reduces the need for typing. You can pick a suggestion by highlighting it.

To begin searching, press either the Enter button on your keyboard, or the 'OK' center button on your keypad, or select [GO](#).

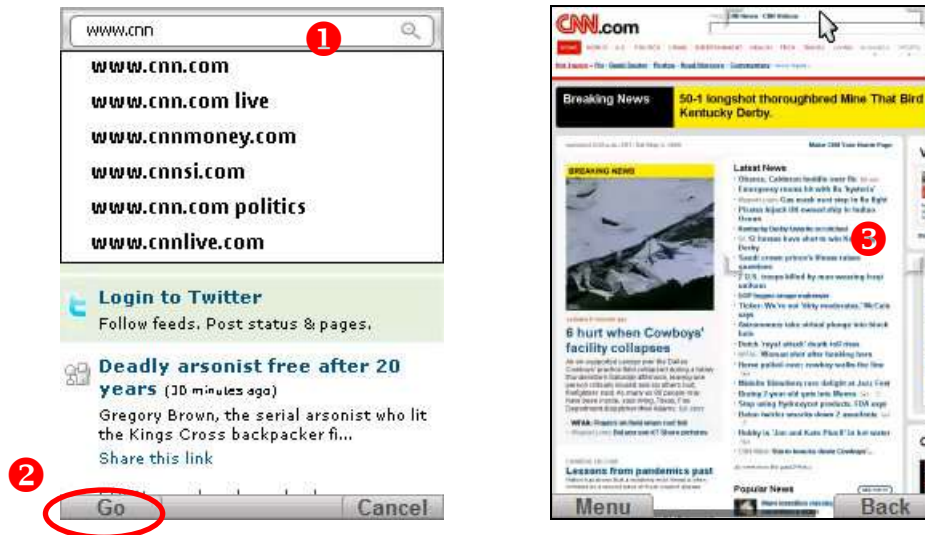
3 Your search results are displayed on the search results page. The search results page is optimized to allow you to go quickly to different results relating to your search term.

4 Different search verticals are immediately accessible, including Web, Local, Images, and Mobile. Google search results are displayed.

How can I get to a specific web page?

Say you are on the Skyfire homepage and you want to go to the CNN website.

Here's how you browse to a specific web site:



- 1 Launch the Superbar by navigating to the top of the screen, or by selecting **Menu | Web Search or URL**, or by pressing the '2' shortcut button on your device.

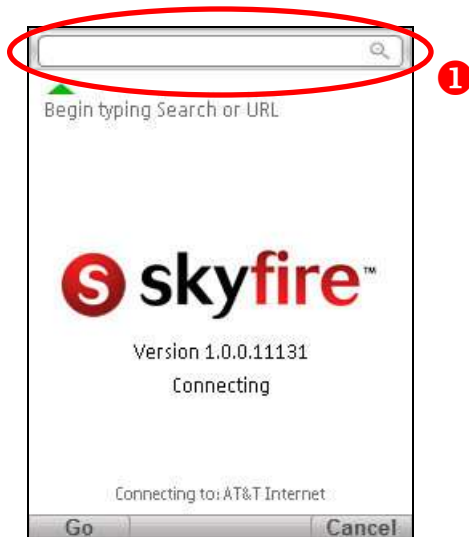
Using your device keypad, enter the address of the website you want to view.

- 2 Select **Go**, or press either the Enter key on your keyboard or the 'OK' center button on your device.
- 3 Skyfire will determine whether a URL or a search query is being performed and will direct you to the right page.

Can I perform a search while Skyfire is starting up?

Yes, you can begin a web search while Skyfire is connecting in the background.

To start a web search while Skyfire is starting up:

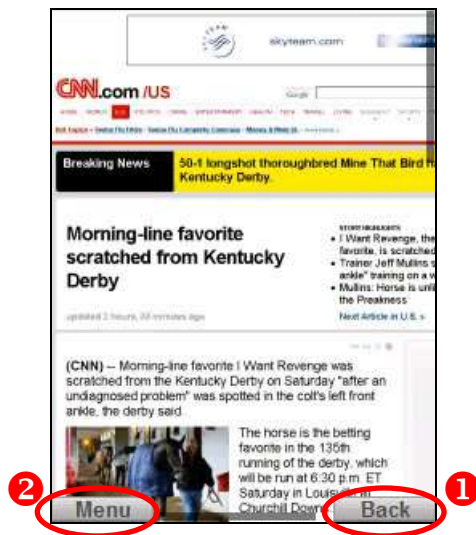


- 1 Select the search bar and, using your device keypad, enter the address or search term you want to look for.
- 2 Press either the Enter key on your keyboard or the 'OK' center button on your device.

How can I move between web pages?

Skyfire allows you to navigate back and forward through web pages that you have already opened in the current session. When you navigate back or forward on the browser, you are always brought to the same viewport you were on before, i.e. you will be returned to that page at the same location on the page and at the same zoom level as before.

To move back and forward between web pages:



- 1 Select the **Back** button, or **Menu | Navigation | Back**, to return to the previous state.

For example, a previous state might be a thumbnail view or a normal view of a Web page that you had zoomed in on.

- 2 Select **Menu | Navigation | Forward** to move forward through pages you have viewed in this session.

You can also use the 7 key on your phone to navigate back a page, and 9 to navigate forward.

How does text entry work on Skyfire?

Entering text into forms is easy with Skyfire.

To enter text:



- 1 Select the first text entry field and press your device's center OK button.

Enter text using your device's keyboard.

- 2 Repeat step one to complete other fields. Press your device's center OK button to automatically move to the next field in the form.

While you are completing a web form, if the next text field is outside the current screen view, Skyfire will automatically move that page area into view.

You can use your device's up and down navigation buttons to move between text fields. The right and left navigation keys help you to move back and forth within a line of text.

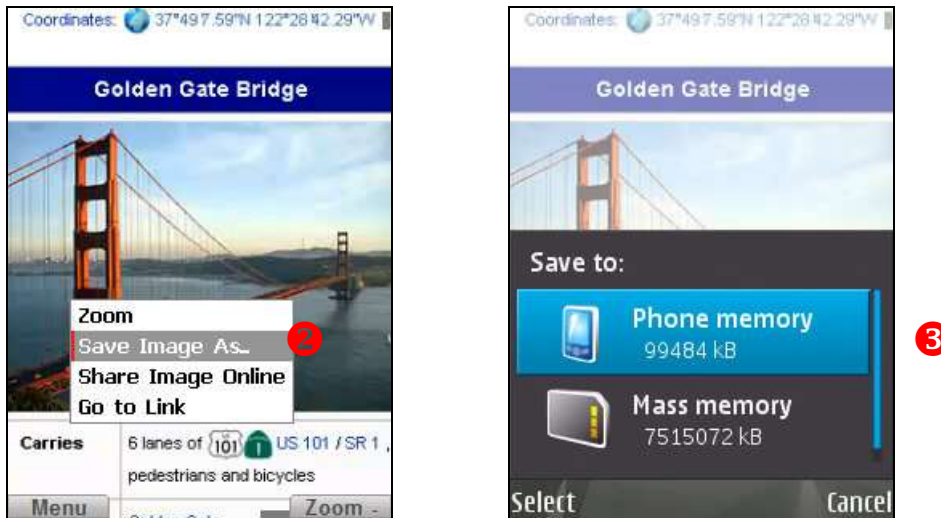
Note: This is also true for multi-line text entry fields – 'up' on the top line and 'down' at the last line will move you out of the text entry field, while left and right will help you to move within the text entry field. Pressing OK or Enter will insert a new line into the text entry field.

How do I download web content?

Skyfire lets you download images and other downloadable content to your device, or to a storage card attached to your device.

Download will work for most sites. At this time, Skyfire is not enabled to download content that is password protected or behind a firewall.

To download an image on a web page to your device:



- 1 Zoom in on the image you want to download.
- 2 Click and hold with your cursor over the image, then select [Save Image As...](#), or select [Menu | Actions | Save Image](#).
- 3 Select the location you would like to save the image to – either Phone Memory or Storage Card/Mass Memory.

On the Save to screen, select the folder you would like to store the image in.

- 4 On the File Name screen, you can change the file name if you wish. Select [OK](#) to continue.

Skyfire will download the file. You cannot move to another page without interrupting the download.

Can I share web content via SMS?

Yes, you can share web content by sending a link to your current web page via SMS (e.g. text messaging).

To share a link to a web page via SMS:



- 1 Browse to the web page you want to share.

Select [Menu | Share](#).

- 2 Select [Page via SMS](#).

The SMS application is launched, with a new message ready to be sent. The body of the new message contains a shortened version of the URL of the web page you are sharing.

You can add or change text in the message if you wish. Enter the address of the person you want to share with and send the SMS.

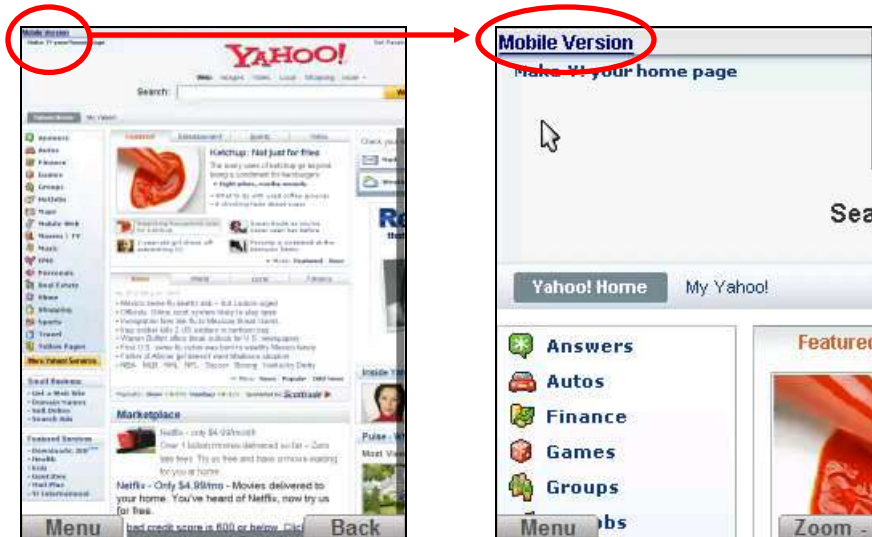
Note, this feature uses your phone's built-in SMS function data charges may apply.

What is the mobile site indicator?

If a website also has a mobile version, Skyfire will let you know that there is a mobile alternative. To do this, Skyfire displays a subtle link at the top left of the web page. You can select this link to access the mobile version of the page.

The Mobile Site Support Indicator is turned on by default. You can turn it off in the Skyfire Settings.

To use Mobile Site Indicator:

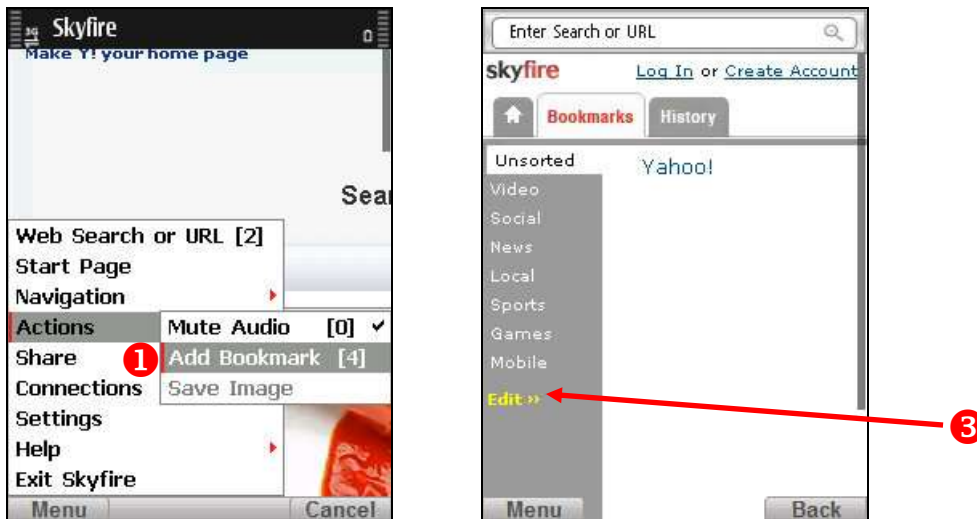


- 1 Browse to a website that has a mobile version.
Skyfire displays a Mobile Version link at the top of the page.
- 2 Select [Mobile Version](#) to go to the mobile version of the site.
- 3 To turn off Mobile Site Indicator, select [Menu | Settings](#).

Uncheck the [Hint for mobile version of pages](#) option and select [Done](#).

How do I add and remove bookmarks?

Skyfire allows you to add, edit and remove bookmarks to your favorite websites.



- 1 Open the web page you want to bookmark and select [Menu | Actions | Add Bookmark](#). Alternatively you can use the '4' key on your phone as a shortcut.
The selected page has now been bookmarked.

- 2 To view and open your bookmarks, select [Menu | Navigation | Bookmarks](#).

This brings you to the Bookmarks tab on the Skyfire start page. Your new bookmarks are automatically added to the 'Unsorted' category.

- 3 To remove a bookmark, on the Bookmarks tab, select [Edit](#), select the bookmark you want to delete, and select [Delete](#).

- 4 To edit a bookmark, on the Bookmarks tab, select [Edit](#), select the bookmark you want to edit, and select [Keep](#) at the end of the current bookmark title.

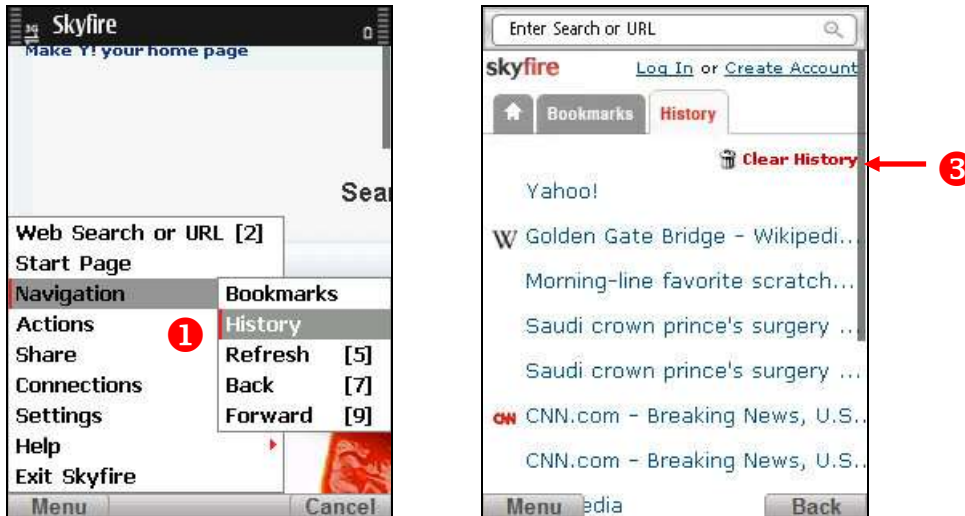
- Make changes to the bookmark title in the Title box.
- Edit the bookmark URL in the URL field, or
- Select the Skyfire Bookmark tab on which you want to display the bookmark from the list of available tabs.

Select [Save](#).

How can I view my browsing history?

You can use links to websites you have recently visited in your browsing history.

To view your browsing history:



- 1 Select [Menu | Navigation | History](#).

This brings you to the History tab on the Skyfire start page.

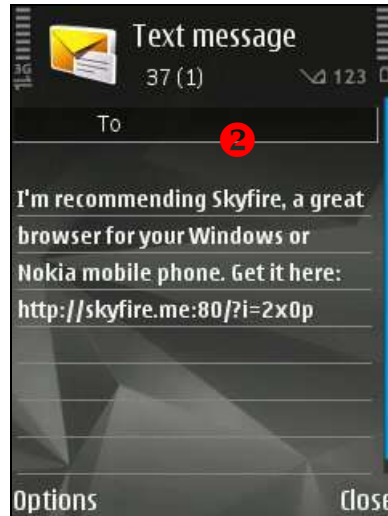
- 2 You can select any link on the History tab to revisit a recently viewed web page.
- 3 You can clear your browser history by selecting [Clear History](#).

Alternatively, you can clear your history through [Menu | Settings](#).

How can I share Skyfire?

You can easily share Skyfire with friends, family, or co-workers by SMS or email. Note that Skyfire is currently available only to individuals using US cell phone networks.

To share Skyfire:



- 1 Select **Menu | Share | Skyfire via SMS**.
- 2 The SMS application is launched, with a new message or email ready to be sent. The body of the new message contains the short form URL which allows the recipient to get Skyfire.

Enter the address of the person you want to share with and send the SMS.

Note that as this feature uses your phone's in-built SMS, thus data charges may apply.

Where can I get help?

Online help is available on the Skyfire browser.

To access Skyfire help:



- 1 Select [Menu | Help | Quickstart Guide](#).
- 2 You can access a variety of help resources by clicking on the on-device help tabs – Navigation, Browser, FAQ.
- 3 To access our comprehensive online help, go to www.skyfire.com/support.

Login to your Skyfire account and click on Launch Help.

Also, please be sure to join our forums, where the Skyfire user community is sharing tips, tricks and feedback. We welcome your your feedback and suggestions.